



Some people see an office, we see a place to change the world.



SPECIAL EDITION 2nd Anniversary and  
Points of Intersection Public Art Installation



“Discovery consists of seeing what everybody has seen and thinking what nobody has thought.”

Albert von Szent-Gyorgy



## Celebrating the 2nd anniversary of our Future Business Centre in Cambridge

It is two years since we opened the doors of our inspirational, new, purpose built Future Business Centre in Cambridge and welcomed our first ventures. Our vision, which so many of you supported, was to create a home for social and environmental ventures to start up and grow, by combining affordable workspace with incubation and innovation support.

It has been a privilege to be a part of the journey of so many different and inspiring ventures. We have supported over 300 with one to one business advice, been a home to 71 enterprises, run three incubation programmes including Social Incubator East and contributed to the creation of more than 200 new jobs. We hope that in the future we can bring our Allia Future Business Centre to many more cities around the UK, as beacons of entrepreneurship for the benefit of society.

We couldn't have achieved what we have done in the last two years, without the support of many people and organisations and we celebrate and recognise the contribution of our investors, supporters, community and colleagues in our Points of Intersection public art installation now on display.

Thank you again for your support.

**Tim Jones**  
**Chief Executive, Allia**

November 2015

[www.allia.org.uk](http://www.allia.org.uk)  
T 0845 456 2431  
@Alliatd



**The Points of Intersection is a Public Art Project devised and managed for the Allia Future Business Centre by Acuity Arts. Artists were invited to respond to a brief and then selected after a national call. Engagement was made with users and tenants of the building, funders and supporters and the immediate community through a series of workshops. The Project reflects the Centre's social and environmental commitment with artworks that respond to themes of nature and sustainability.**

#### About Acuity Arts

Acuity Arts provide art advisory services for a wide range of clients and sectors. We are matchmakers bringing together the worlds of business and the arts.

We specialise in managing commissions, sourcing artwork for offices and public spaces and we curate exhibitions. We are also experienced in devising and facilitating workshops and corporate social responsibility initiatives in workplaces and the wider community.

Acuity Arts connect organisations and individuals, engage and enable employees and embed businesses in communities.

[www.acuityarts.co.uk](http://www.acuityarts.co.uk)

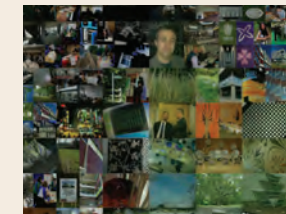


## [The People's Picture]

The People's Picture website is a stand-alone portal for work in the area of socially engaged and collaborative practice in the public realm.

Thousands of photographs were collected from users and supporters of the Future Business Centre and workshops were held in the Centre's atrium and nearby Grove School. The photos were then processed by the Artistic Director to create the photomosaic. With extensive experience across many sectors this approach pushes the boundaries of technology and art, whilst keeping people and their stories at the heart of this practice.

#### The People's Picture



**Magnified section of picture left**

*"The People's Picture really enjoyed compiling the images to make the final montage composed out of 4,500 photos edited down from over 15,000 images. There were some impressive submissions and a really diverse mix of contrasting photographs, which once juxtaposed created stories.*

*We particularly liked the abstract forms, many of these from science or technical based images. This influenced our final choice of image, which has a soft and natural shape despite the busy and contrasting number of images contained within it."* **Artistic Director of The People's Picture**

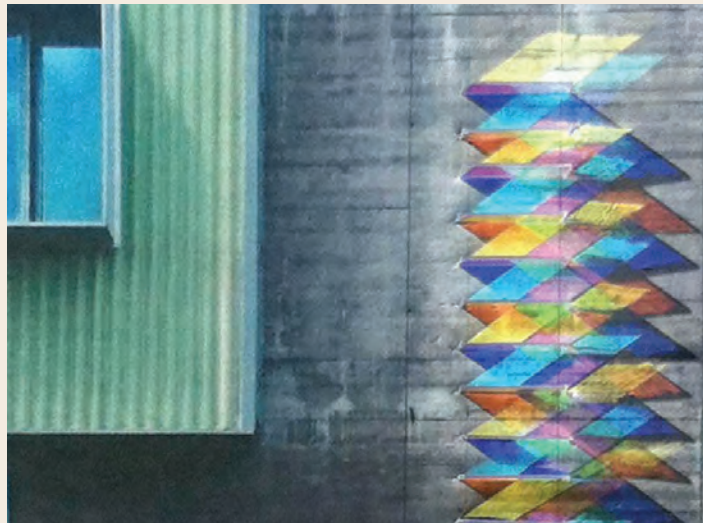


## Chris Wood profile and work

**Chris Wood** is a UK artist working with dichroic glass which refracts light and creates kaleidoscopic reflections. Dichroic glass is a two-tone material with a special optical coating that only reflects certain wavelengths of light.

Glass allows Chris to exploit the aesthetic potential of Light itself. Minimal structures support simple arrangements which interact with natural light to create complex patterns of light and shade that change depending upon the position of the viewer and the angle of the light source.

### A Step Up



*"From the outset I knew I wanted to create a work for this exterior wall so that neighbours and passers by can also enjoy its daily weather dependent variations. For me 'A Step Up' speaks of the crucial support that Future Business Centre offers to a vibrant mix of enterprises to grow and develop their aspirations."* **Chris Wood**

## Bonnie Craig profile and work

**Bonnie Craig** is a UK-based visual artist and designer working with pattern and print and using a wide range of techniques and media. Her use of pattern draws attention to the sometimes overlooked details in nature, buildings and the environment.

Bonnie creates both large and small scale pieces. At the Future Business Centre she worked with two long, narrow corridor spaces on separate floors to create two highly contrasting and yet complementary installations using vinyl.



*"The corridor installation designs were based on research conducted at the Future Business Centre including working with the building's tenants and hearing about their work. The final designs took inspiration from a range of themes – including research, science, energy, information sharing and wellbeing – and took the form of applied-vinyl artwork created by patterns that occur in nature. They reflect the balance achieved in the FBC between hard work, productivity, professionalism and a strong work ethic and the more relaxed atmosphere, flexibility and potential to adapt as needed. Creating artwork that is combined from many small, repeated elements shows the prevailing sense at the FBC that more can be achieved by working together and supporting each other, as so often happens in the natural structures that surround us."* **Bonnie Craig**

## Vinny Stapley profile and work

**Vinny Stapley** has worked as a textile artist and designer with a wide-ranging experience in art textiles, fashion industry, and teaching in primary, secondary and sixth form.

As workshop leader, Vinny devised a series of workshops in and around the Centre. She worked with tenants and users at the Centre and pupils at nearby Grove School to create material which fed into the final concepts used by fellow artists Chris Wood and The Artistic Director of The People's Picture.



## Ione Parkin RWA profile and work

**Ione Parkin's** work explores themes of interconnectedness and diversity within the natural world. Her abstract paintings are contemplations on primal energy, chemical fusion and geological process. She seeks inspiration from varied environments and refers to satellite macro-imagery of Earth's surface and radio-telescopic images of deep space. Her work celebrates the beauty of the raw elements of nature.

Ione has shown nationally and internationally since 1998 and her work is in many corporate and private collections. She is an elected member of the Royal West of England Academy (RWA).



### WITH YOUR HELP

- A recognised home for social and environmental ventures to flourish
- More than 300 ventures supported
- 200 new jobs created
- Three incubation programmes supported

### With our sincere thanks to the generous organisations and individuals who share our vision

Abcam plc  
Alium Design  
Anthony Quinn  
ARM plc  
Cambridge City Council  
Cambridgeshire Chamber of Commerce  
Cedric and Valerie Foster  
Eddie Powell  
Gibson Developments  
Sir Hugh Duberly, Lord Lieutenant of Cambridgeshire  
Interserve PLC  
Jane Thompson  
Method Creative  
Sir Michael Marshall CBE

MPM Properties  
Mr and Mrs G Rushby in memory of Mick Rushby  
Real VNC Ltd  
Roger and Alison Thornton  
Rugby Cement Development Foundation  
Simon Dazeley  
Stephen Conrad  
TTP Group plc  
Xaar plc  
5th Studio

Thanks also to the ERDF who provided match-funding.





## An exciting and diverse array of ventures have made the Future Business Centre their home, all sharing the desire to make a positive impact for people and planet.

Read their stories below

### Alchemie Technology

Alchemie Technology offers technical, commercial and business support to those entering or establishing a product position in the rapidly growing industrial inkjet industry, Alchemie joined our start up and growth programme in 2013 when they hadn't yet incorporated. They joined the Climate KIC accelerator programme on our advice and are now a tenant at Future Business Centre employing 6 people (expecting to employ a further 4 in the next 12 months.)



### GreenAir Cars

GreenAir Cars is a premium chauffeur service specialising in airport transfers and long distance journeys in East Anglia, the South East and London. They use hybrid or fuel efficient vehicles that have a lower environmental impact and they offset 200% of vehicle emissions to create significant carbon reduction for their customers and clients.

GreenAir Cars benefitted both from business support from the Future Business Centre and as tenant within the Centre's incubator space. They received support from our advisors around their early challenges of finding customers, marketing and recruiting new drivers and as they continue to grow they are working with their mentors to develop people management, sales, marketing and customer development strategies for the business.

At the start of their engagement with Future Business Centre, the company had 6 employees. They have grown to over 20, and expect a further 20% growth in employee numbers over the next financial year.

## What we offer social and environmental ventures (a-z)

Acceleration support for ventures

Affordable workspace

Business planning

Business advice

Community of like-minded organisations

Co-working space

Events programme

Funding (sign-posting and brokering)

Hatchery – workspace for pre-start-ups and early stage

Incubation programmes:

- Social Incubator East
- Green Inc
- Climate KIC

Innovation support

Low carbon, purpose built Centre

Mentoring

Membership benefits and networking opportunities

Partnership programme

Peer to peer support

Start-up support

Virtual offices



Allia FUTURE  
BUSINESS  
CENTRE

Some people see an  
office, we see a place  
to change the world.

Reception



PETERBOROUGH